

Garindan costume replica guide

**PILERUD'S
COSPLAY**
AKA: DZ-7959 in The 501st Legion
facebook.com/PilerudsCosplay



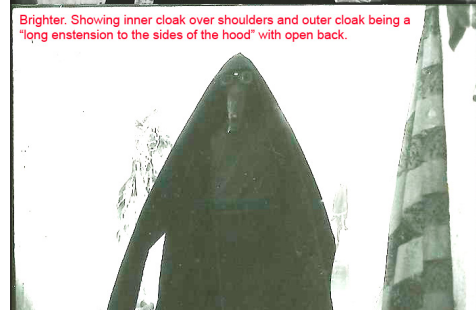
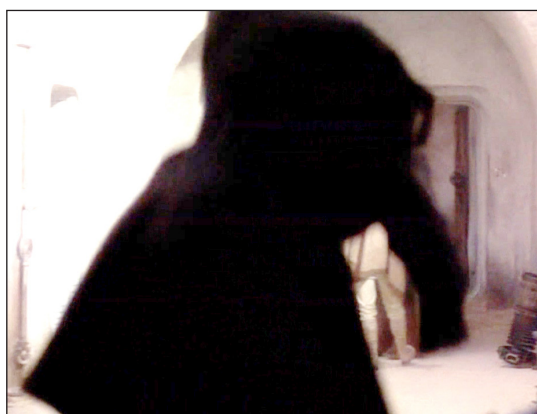
Research

Garindan is a hard costume to research, since he has so little screen time and is never seen in full. However, looking closely at how the cloths drape around the body and all available pictures this guide at least gives you something that looks the same as far as you can see, and fills out the rest with good guesses.

The action figures to date are inaccurate, especially the hooded cloak. The top right picture on this page is absolute proof of the "open back" design of the cloak. It is a still from the set where on side flap goes up, and also confirms an inner cloak is worn under the hooded cloak.

In the close up (talking to the sandtrooper) the hooded cloak is drawn back at the shoulder making it look a bit different. Most likely done to make more of the face visible to the camera.

Until, if ever, more reliable pictures surface, this is pretty much as close as it gets.





Mask to scale based on the size of the goggles. Front view.

(Note that depending on if you are very tall or short you might want to adjust the size to make it proportional. Also note that these calculations might not be perfect. Always compare to as many reference pictures as possible.)

Mask to scale based on the size of the goggles. Side view.

(Note that depending on if you are very tall or short you might want to adjust the size to make it proportional. Also note that these calculations might not be perfect. Always compare to as many reference pictures as possible.)



21,5 cm

Mask

Medium dark grey with black goggles. Made to look like leather with holes and stitches. Cover all of the visible parts of the head when the hooded cloak is worn. Tinted lenses on the goggles to hide eyes.





Hooded cloak

Black medium thickness wool fabric. Open front and back as seen in the picture. The hem is not sewn, but fastened with Vliesofix, to avoid visible seams around the edge.

It has a point at the top of the head and at the back at the shoulders. These comes naturally as the cloak drapes over the body. Especially if these parts have been strengthened with Vlieseline or similar.

Weathered to look dusty at the bottom.



Inner cloak

Black wool fabric. Can be thinner than the hooded cloak to make it cooler. The hem is not sewn, but fastened with Vliesofix, to avoid visible seams around the edge.

Weathered to look dusty at the bottom.

Comlink

Standard ANH imperial comlink.



Belt

Black leather, or leather like, belt with black buckle that is the same width as the belt. About 4 cm wide.





Shirt

Medium grey shirt. No visible buttons, decorations or pockets. Closes with the right hand side over the left.



Balaklava

To hide your skin around the mask.



Gloves

Black leather, or leather like, gauntlet style gloves.

Pants

Black suit style pants with no decorations.



Boots

Black leather, or leather, like riding boots without decorations. Weathered to look dusty.









Mask (1)

Garindan mask making part 1

1. Printed my reference pictures in correct size. Transferred them to a piece of floor insulation styrofoam. Front and side views.



2. This kind of fine grain styrofoam is very easy to cut and sand. Great for sculpting.



3. When I was satisfied with the shape using the knife, I sanded it with a "sponge" type sand paper. This is also very easy. Use a finer grain sand paper to get it super smooth.



4. Added some details using hot glue, and pressed down some holes. Using regular painters filler I evened out some places.



5. Brushed on one coat of regular PVA wood glue. This protects the surface and prevents the Worbla from sticking too hard to the surface. Also some protection from the hot air gun. Let it dry.



6. Using a non flexible tape, I will transfer the shape of the snout to a two dimensional template.



7. Cutting open the tape and carefully removing it. Putting it on a piece of paper. Now I have a template.



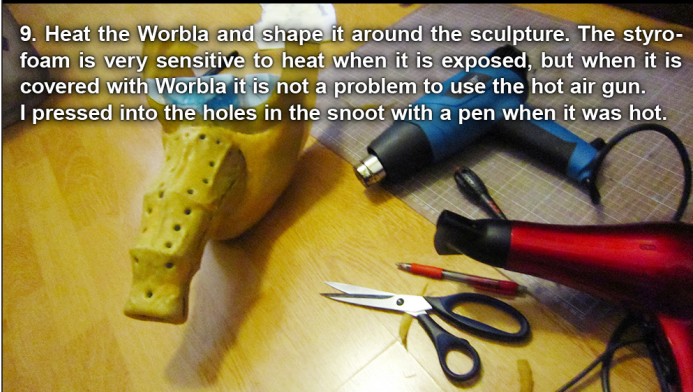
8. Transfer the template to Worbla's Finest Art (a kind of thermo-plastic) and cut out. Perhaps add a little extra. (I also made a template the same way for the face part.) I used a single layer of Worbla for this build, but fusing two layers (or more) together makes it very rigid. Not necessary here.



Mask (2)

Garindan mask making part 2

9. Heat the Worbla and shape it around the sculpture. The styrofoam is very sensitive to heat when it is exposed, but when it is covered with Worbla it is not a problem to use the hot air gun. I pressed into the holes in the snout with a pen when it was hot.



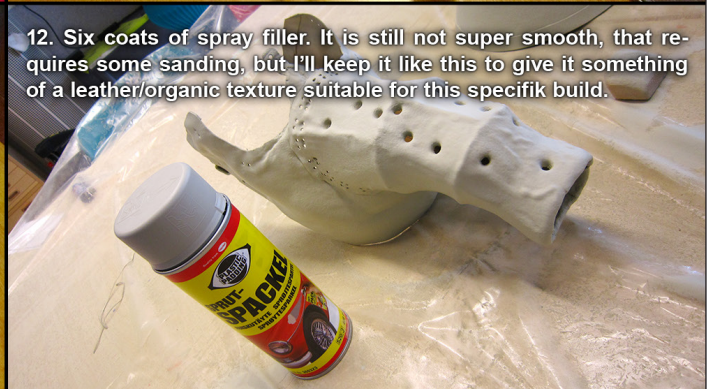
10. Wait until the Worbla has cooled down completely. It takes a bit of careful work, since the Worbla still sticks a bit to the styrofoam, but it can be removed without harming the sculpture. Reinforce the Worbla on the inside where needed.



11. The finished shape of the mask with goggles added. I have made several holes for the stitches using a hole puncher where it could reach, and a pointy soldering iron for the rest.



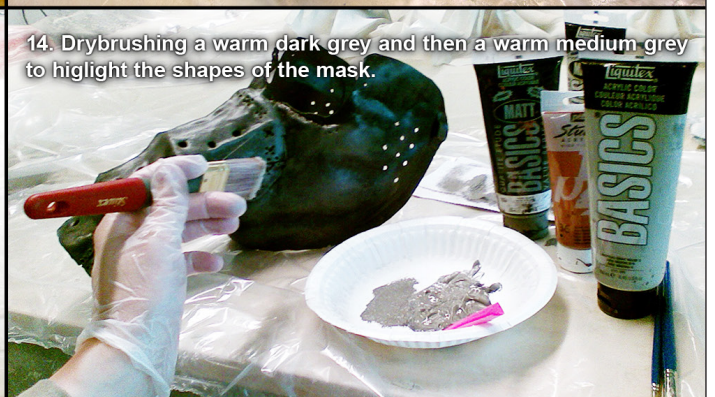
12. Six coats of spray filler. It is still not super smooth, that requires some sanding, but I'll keep it like this to give it something of a leather/organic texture suitable for this specific build.



13. Used a grey primer and then two coats of flat black spray paint.



14. Drybrushing a warm dark grey and then a warm medium grey to highlight the shapes of the mask.



15. Painting is finished.



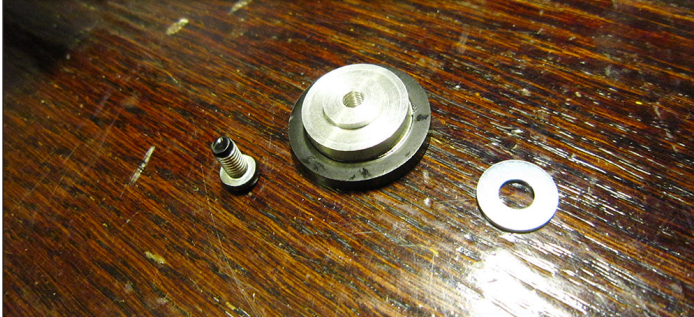
16. Took apart the welding goggles. The soft part was green so I used a plastic primer and regular black spray paint.



Mask (3)

Garindan mask making part 3

11. I use an imperial cap emblem with the outer ring painted flat black as the metal disc between the lenses.



11. I can't be certain that is what originally was used, but it looks pretty close.



12. Sewing the stitches with a thick black string (for weaving carpets). Used a flashlight to be able to see the needle inside to find the holes.



13. Finished mask.



13. The mask is open at the top and bottom to be cooler, since you never see those parts. I does however require a balaclava.



Shirt



Inner cloak

Worn under the hooded cloak

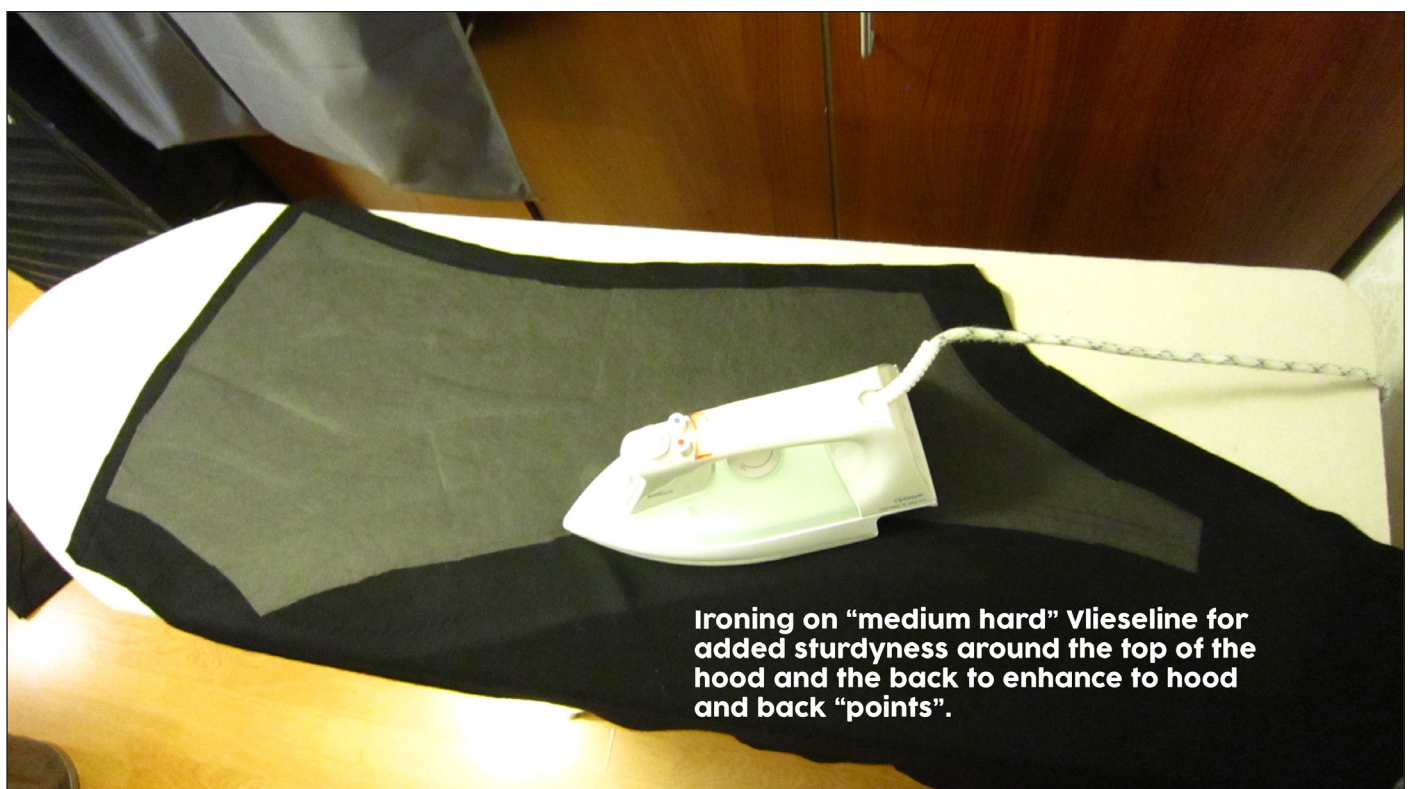
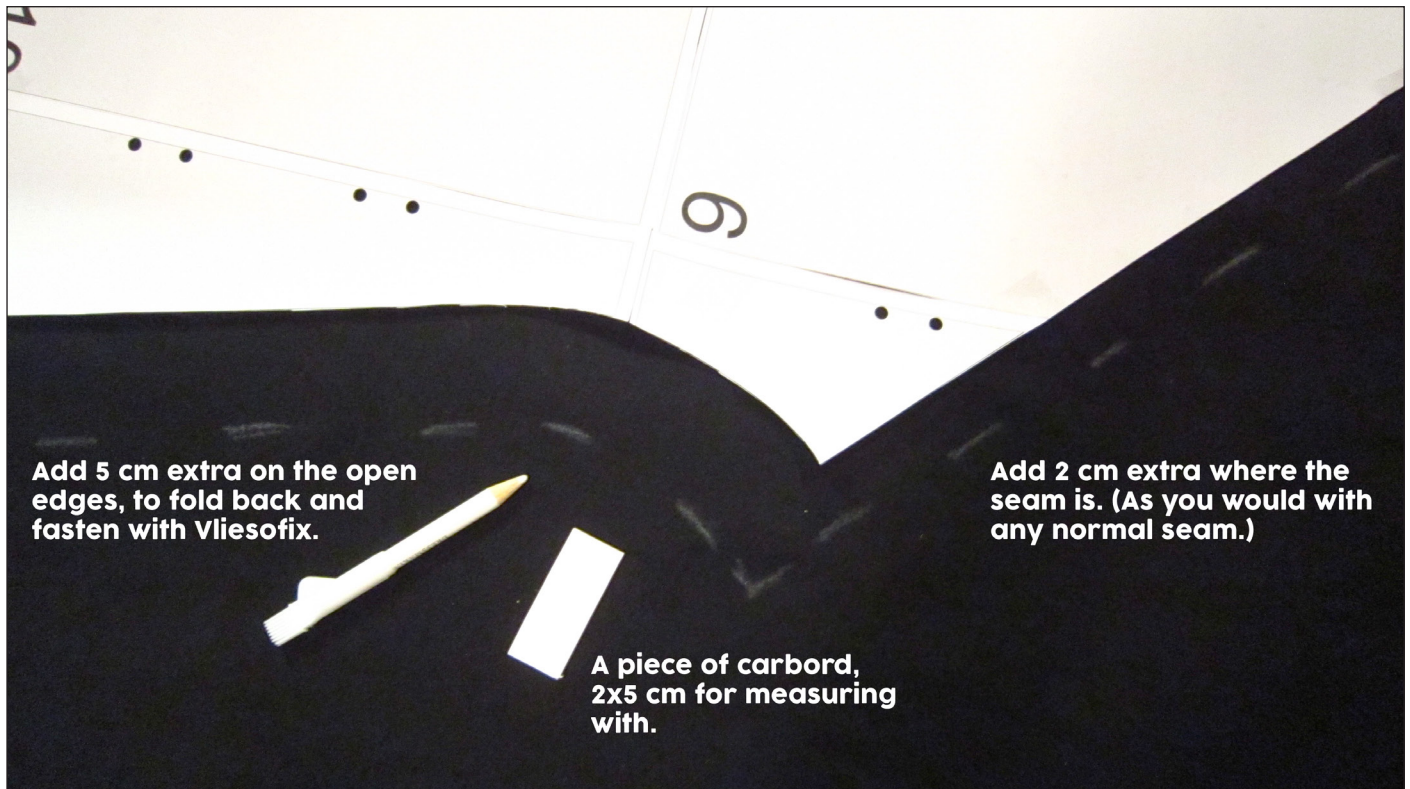


Inner cloak.

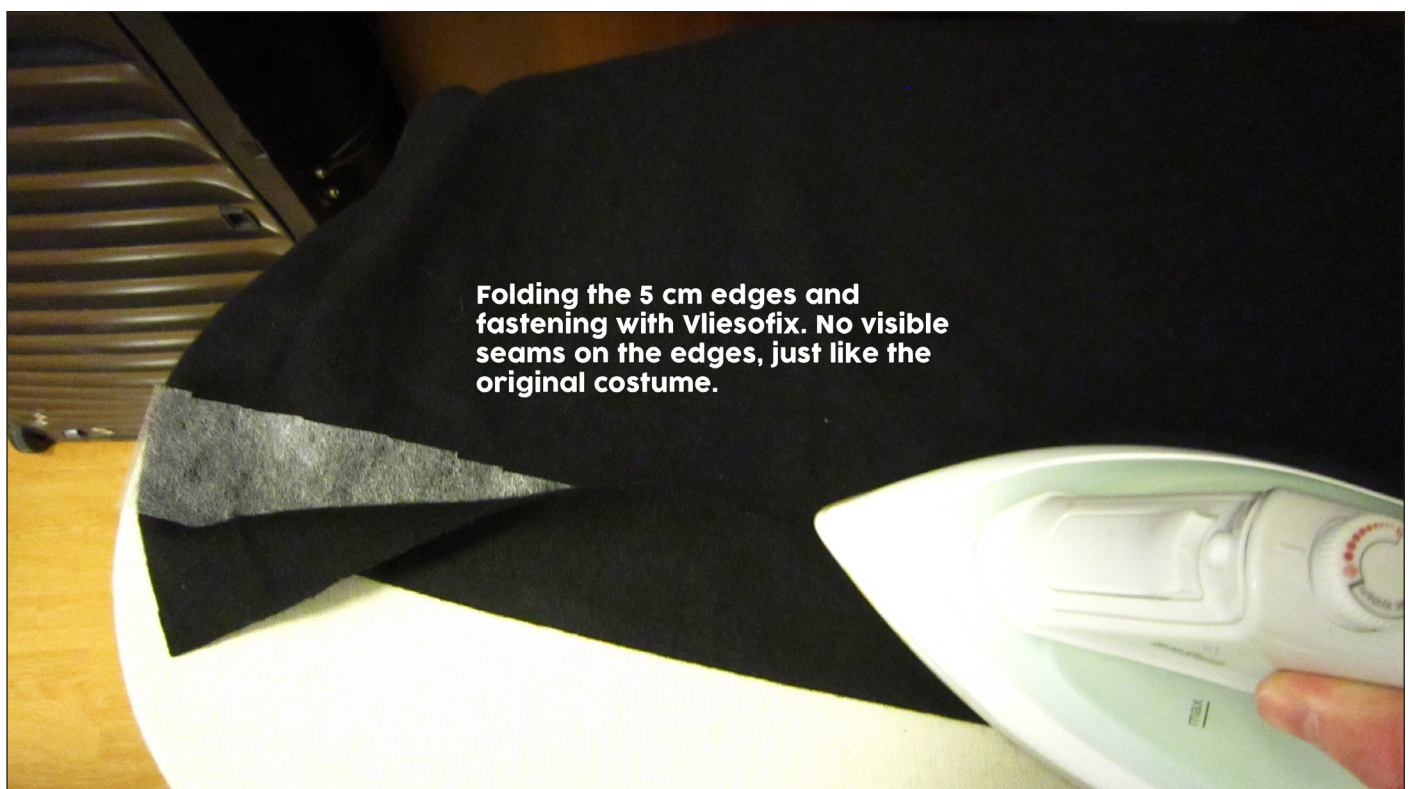
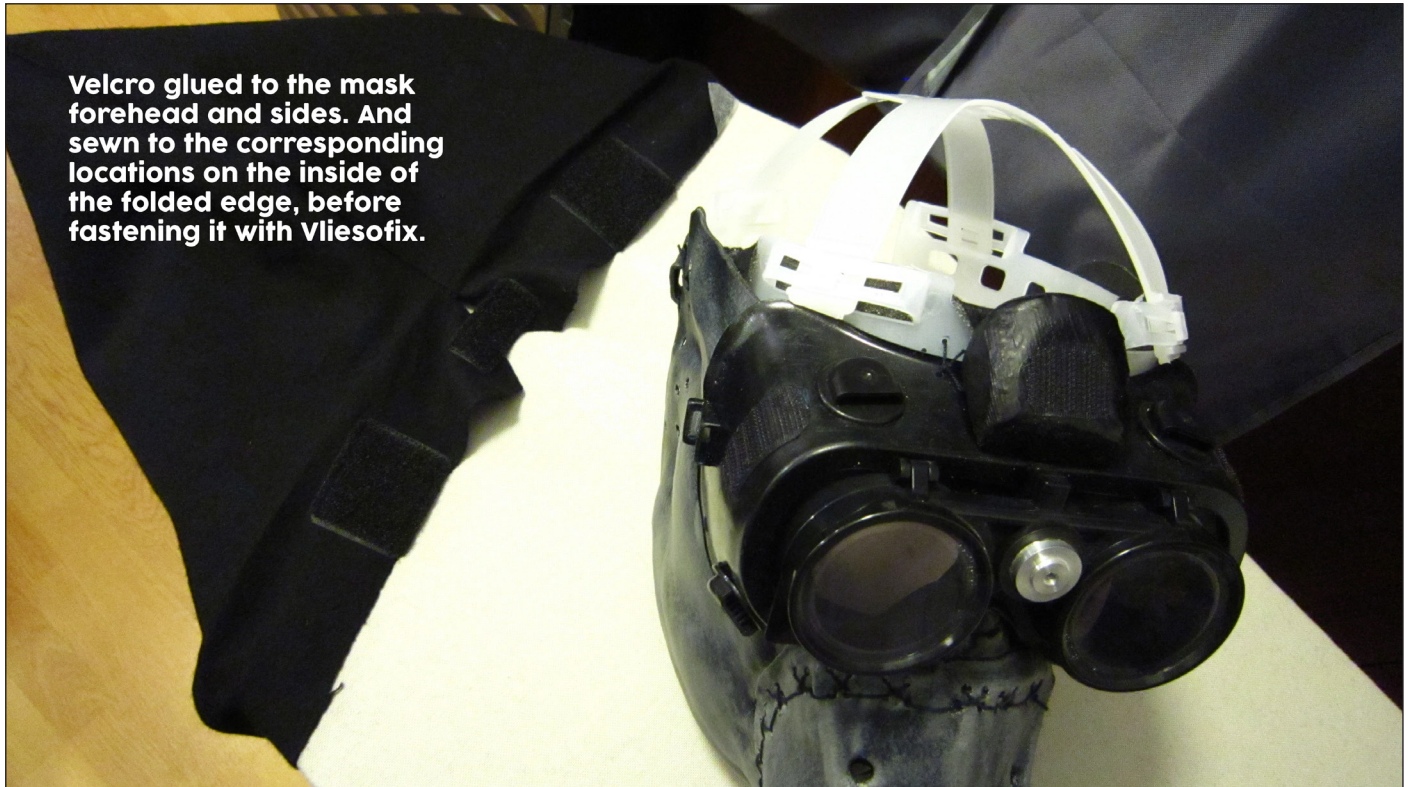
A square piece of fabric. Cut and sewn so it narrows over the sholders.

Finished size 145 cm long, 110 cm wide. (When worn, make it end where the hooded cloak ends.)

Hooded cloak (1)



Hooded cloak (2)



Garindan hooded cloak sewing pattern

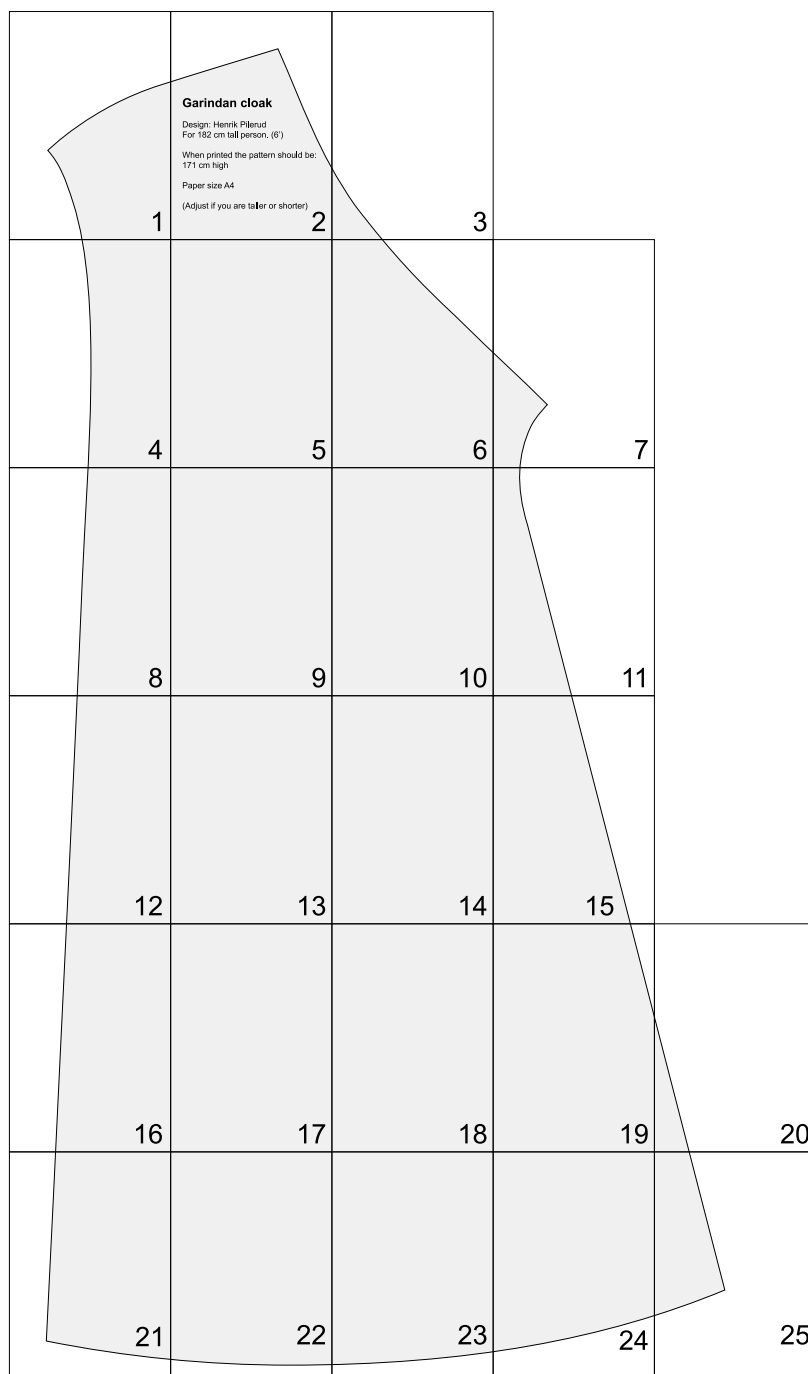
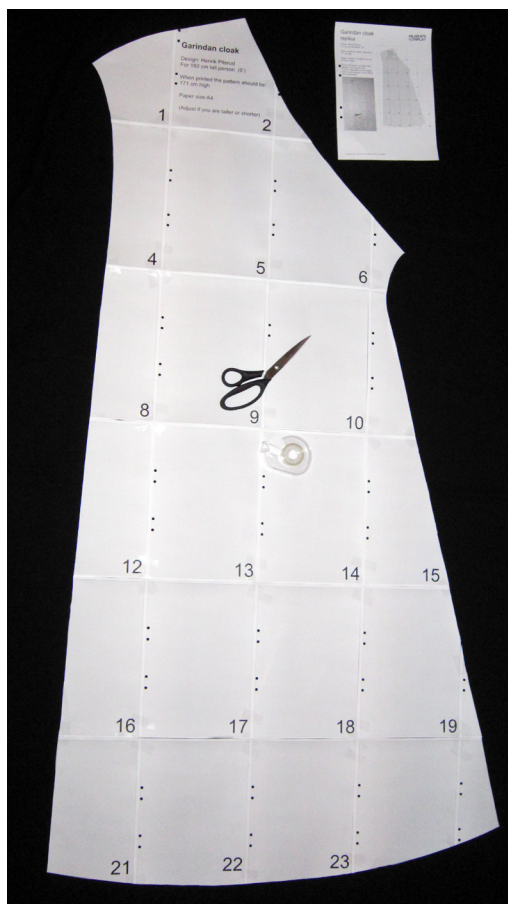
For 182 cm tall person. (6')

When printed the pattern should be:
171 cm high

(Make it bigger or smaller if you are shorter or taller.)

Print on A4 papers, and tape them together next to each other.

Do NOT "adjust/shrink to printable area" in print settings, or the pattern will be deformed!





1

Garindan cloak

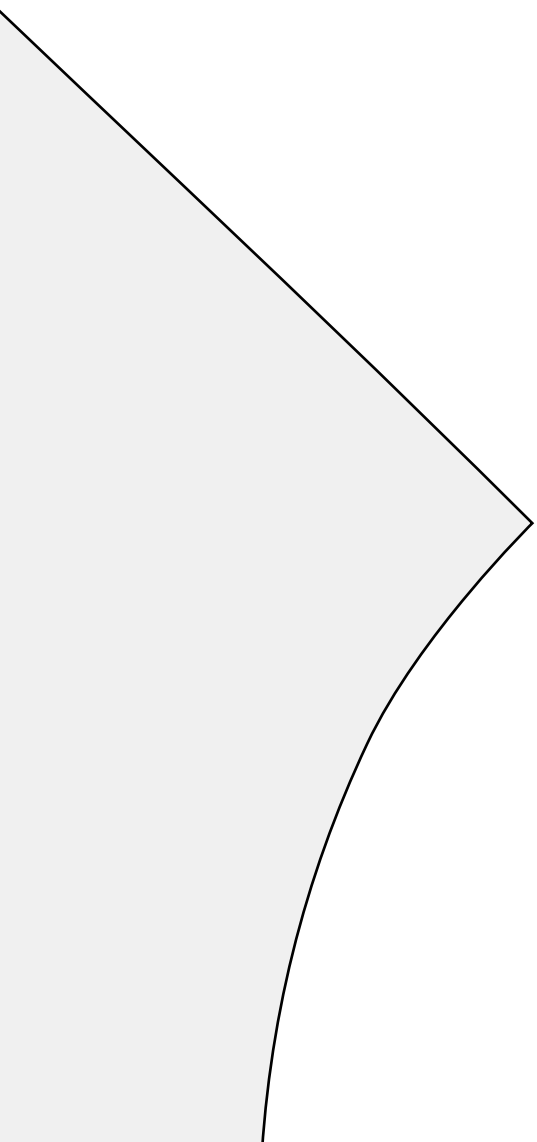
Design: Henrik Pilerud

For 182 cm tall person. (6')

When printed the pattern should be:
171 cm high

Paper size A4

(Adjust if you are taller or shorter)





15



25